



# Fees



## Hours

Standard Days: 7.30am - 6.30pm

We're open 51 weeks per year, excluding bank holidays and 3 team development days. All nurseries will close for one week between Christmas and New Year.

## Standard Plan

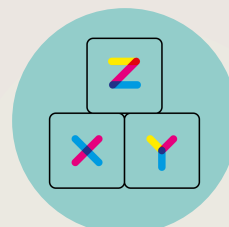
Fees are all-inclusive of nutritious meals, snacks and formula for infants, as well as nappies and wipes. We issue invoices by the 20th for the following month and ensure all payments are made before the 1st. We cannot issue refunds for sickness or holidays. Fees will be reviewed annually in January in accordance with nursery operating costs, and any increases will be applied from April's invoice.

**Standard Day Rate: Under 3s: £95 / Over 3s: £92**

Minimum 2 full days, including a Monday or Friday

Days	2	3	4	Full Time*
<b>Standard Monthly Fees</b>				
Unders 3s	£807.50	£1,211.25	£1,615.00	£1,816.88
Over 3s	£782.00	£1,173.00	£1,564.00	£1,759.50
<b>Cost of additional hours per month with EYFE** +</b>				
9 - 23 Months with funding (15 hours)	£411.73	£815.73	£1,219.73	£1,462.73
9 - 23 Months with funding (30 hours)	coming September 2025			
2 Years with funding (15 hours)	£477.00	£881.00	£1,285.00	£1,487.00
2 Years with funding (30 hours)	coming September 2025			
3 Years with funding (15 hours)	£581.00	£972.00	£1,363.00	£1,559.00
3 Years+ with funding (30 hours)		£723.00	£1,114.00	£1,310.00

\*Full-time discount applied \*\*Indicative fees only + Consumable charge included



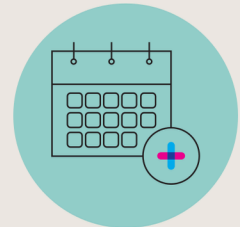


# Fees



## Ad-Hoc Days

Subject to availability, ad hoc days are available at our standard day rate. We ask that you request any ad hoc days between 2-10 working days before your preferred date so that we can allow for correct staff planning.



## Plan Conditions

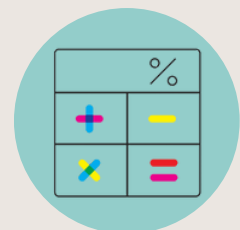
Minimum attendance is 2 full days, including a Friday or a Monday. All plans are subject to availability.



## Discounts

A 10% discount is applied to our Full Time plan and is already included in the fee table depicted above.

An 8% sibling discount is available when two or more siblings attend a kinderzimmer setting at the same time. The 8% is applied to the oldest child's fees. If more than two siblings attend the setting, the discount will be inherited by the second oldest child once the oldest progresses to school.

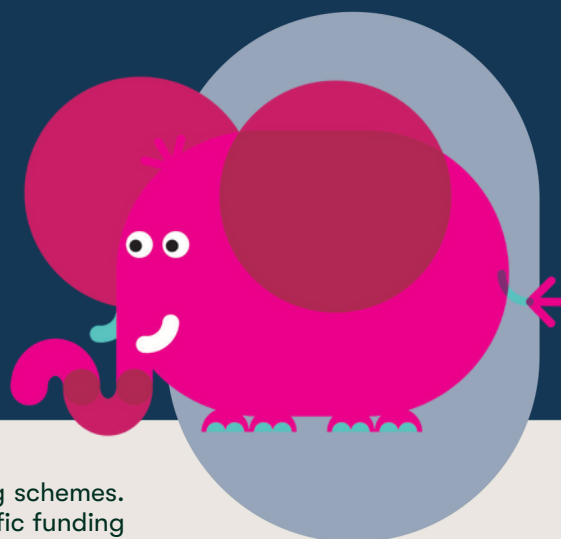


Discounts cannot be used in conjunction with one another, but can be used in conjunction with funding, Tax-Free Childcare and other childcare vouchers.

Fees are calculated based on the 51 weeks of the year that we operate, averaged into 12 monthly payments. Monthly payments will include public holidays as well as inset days, which are payable in spite of closure, as our monthly operating costs remain the same.



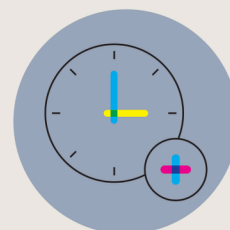
# Funding



Children at kinderzimmer are able to benefit from Government funding schemes. If you qualify for funding, your child can become eligible for age-specific funding the term after the relevant birthday.

## 9 - 23 Months

If eligible, children can claim 15 hours funding, which totals 570 hours per year. This will increase to up to 30 hours funding from September 2025. Updated funding codes must be provided by the parents or legal guardians.



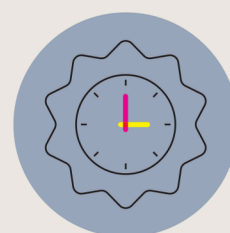
## 2 - 3 Years

If eligible, children can claim 15 hours funding, which totals 570 hours per year. This will increase to up to 30 hours funding from September 2025. Updated funding codes must be provided by the parents or legal guardians.

## 3 - 5 Years

After their third birthday, all families in England are eligible for a total of 570 hours per year, that you can use flexibly (subject to T&C's).

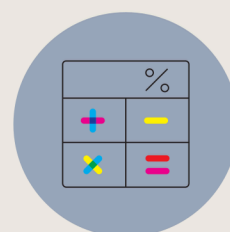
Some families are eligible for a further 570 hours, and this can be used on a plan of 3 days or more per week. Updated funding codes must be provided by the parents or legal guardians for extended entitlement (30 hours).



## Tax Free Childcare

Tax-free childcare can provide a significant saving for you each month and is available for all children of nursery school age. It can also be used alongside the above funding options.

To check your eligibility and to get started with your application, we recommend visiting: [childcarechoices.gov.uk](https://childcarechoices.gov.uk)



Our nurseries are open for 51 weeks of the year. Therefore, the Government funding of 38 weeks of the year (term time), is stretched over the full opening period; 15 hours equates to 11.8 per week.



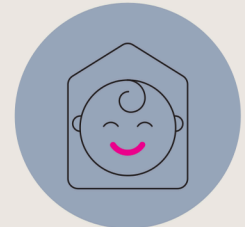
# Place Offers



## Settling In

We offer free settling in sessions, that will vary in time and parental involvement, and which will commence a week prior to your preferred start date. We find the majority of children will feel fully settled within three sessions and, upon reflection with both parent and key person, will then continue to begin their full-day plan the following week.

We recognise that some children will settle more readily than others, with factors such as their age and stage of development, and the amount of time they have spent away from home and their parents, all contributing. As a result, we look to create a partnership with our parent(s), or guardian(s), and their child's key person to determine how long the settling period will be.



## Registration & Place Offer

To begin registrations, you must have completed an enquiry form, which can be found at [kinderzimmer.co.uk](http://kinderzimmer.co.uk). Our admissions team will be in touch with you to book an introductory call or nursery visit.

After your visit, you will be invited to register for a place and pay a non refundable registration fee of £200. Subject to our availability, we will send you a formal offer letter or offer for you to join our waiting list. If we're unable to find a place that matches your preferences, your child will remain on our waiting list until a suitable place becomes available, or if you request them to be removed.

Offers are typically offered 3 months in advance of your preferred start date. This will vary depending on availability. Upon receiving our place offer, we ask you accept the place within 48 hours and make the payment of a refundable £400 deposit. This deposit will then be deducted from your first full invoice with us at kinderzimmer.



### Waiting List Guarantee

If we're unable to offer you a place within 3 months from the preferred start date in your registration form, and you wish to withdraw your position on our waiting list, you are entitled to request a refund of any paid registration fee upon withdrawal from the waiting list. Should, at any time, you wish to re-register for the waiting list, the registration fee will be payable again.



# Tours



Tours are recommend to book prior to registering your child with us so you can meet the team, answer any questions you might have, and generally get a feel for if kinderzimmer is right for you and your family.

Upon enquiring online, you will be invited to book a tour online. Should you have any issues during this process, simply pop an email to [hello@kinderzimmer.co.uk](mailto:hello@kinderzimmer.co.uk) and we'll be able to help!

A few days prior to your tour, a member of your local kinderzimmer team will pop you a call to confirm your tour and get to know your family a little bit. This will help personalise your tour on the day.

At the end of the tour, you will have the opportunity to register for a place if not done so already. We will invite you to register for a place with a non-refundable registration fee of £200.

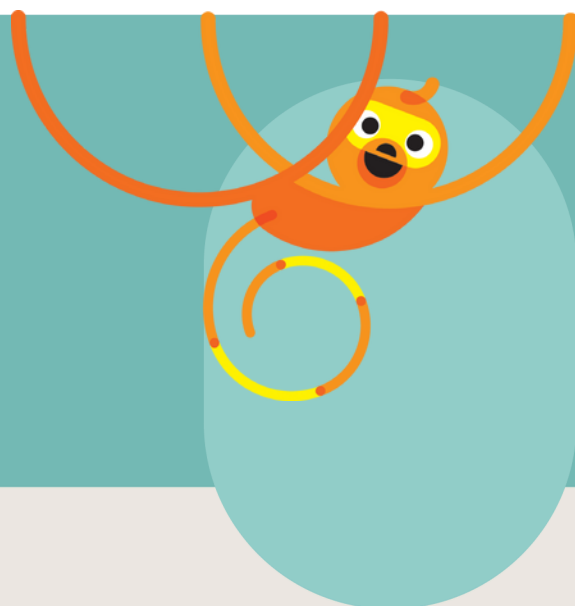
Based on our availability alongside your preferences, we will then offer your child a place, or place them on our waiting list. Once you receive a formal offer letter from us, we ask that you accept the place within 48 hours and pay the refundable deposit of £400.

*Please note, tours will be offered depending on the nursery teams availability, but we will do our best to accommodate your availability as well.*





# Places



## Allocation of Places

When reviewing places we can offer, we consider the following areas of priority:

- Children who have the greatest requirement for childcare sessions
- Children who have siblings who are already attending the nursery
- When the application is received (extra weight is given to those who have been on the waiting list the longest)



## Place Offers

Typically, you will receive a place offer 3 months prior to your preferred start date. We will send out place offers based on our availability and your set preferences. If we can offer a place sooner than 3 months, we will endeavour to do so.



If the place offer is not suitable, and you do not accept it, your child will remain on the waiting list until a more suitable place becomes available.

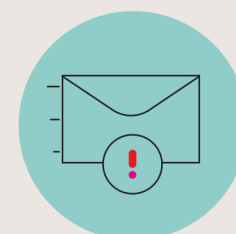
## Acceptance Deadline

Upon accepting a place offer, a £400 place acceptance deposit will be required within 48 hours. This will be deducted from your first full invoice with us. Upon receipt of this payment, your plan will be secure.



## Requesting Changes To Your Plan

Should you wish to change your plan, you will need to send a request to your Head of Nursery. Our plans and timetables have been carefully planned, so any change to your plan is not guaranteed. Should there be availability, increases in days can be made effective immediately whilst reduction in days require 8 weeks' notice.



Reduction in plans can only be requested once per calendar year.



# Cancellations



## Cancelling a Confirmed Place

We ask for notice of cancellation as early as possible.

**If you cancel more than 3 months prior to your child's start date, your £400 deposit will be refunded in full. However, your £200 place registration fee will remain non-refundable.**

**If you cancel between 2-3 months prior to your child's start date, both the £400 deposit and £200 place registration fee will be non-refundable.**

**If you cancel between 1-2 months prior to your child's start date, an additional cancellation fee will be charged at 50% of your plan's monthly fee.**

**If you cancel between 0-1 months prior to your child's start date, an additional cancellation fee will be charged at 100% of your plan's monthly fee.**

Once your child's place has started with us, we ask that you serve 8 weeks written notice from your desired cancellation date. For example, if you wish to end your child's place on August 31st, we will require served notice on or before July 8th. Fees will remain required to be paid in full for the months of your notice period.

