



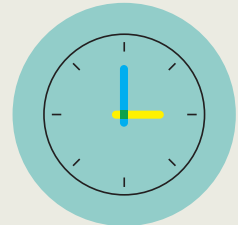
# Fees



## Hours

Standard Days: 7.30am - 6.30pm

We're open 51 weeks per year, excluding bank holidays and 3 team development days. All nurseries will close for one week between Christmas and New Year.



## Standard Plan

£90 per standard day

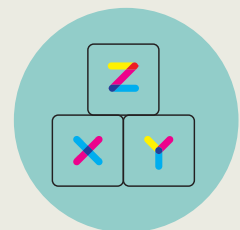
Fees are all-inclusive of nutritious meals, snacks and formula for infants, as well as nappies and wipes. We issue invoices by the 20th for the following month and ensure all payments are made before the 1st. We cannot issue refunds for sickness or holidays. Fees will be reviewed annually in July in accordance with nursery operating costs, and any increases will be applied from September's invoice.



## Standard Plan

Minimum 2 full days, including a Monday or Friday

| Days  | 2       | 3         | 4         | Full Time |
|---|---------|-----------|-----------|-----------|
| Standard Monthly Fees                                     | £765.00 | £1,147.50 | £1,530.00 | £1,721.25 |
| Cost of additional hours per month with EYFE (15 hours)** |         |           |           |           |
| 9 Months - Coming September                               |         |           |           |           |
| 2 Years with funding                                      | £369.33 | £751.83   | £1,134.33 | £1,325.58 |
| 3 Years with funding                                      | £477.63 | £860.13   | £1,242.63 | £1,433.88 |
| 3 Years+ with funding (30 hours)                          |         | £572.75   | £955.25   | £1,146.50 |



\*Full-time discount applied \*\*Indicative fees only

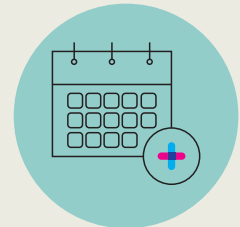


# Fees



## Ad-Hoc Days

Subject to availability, you can ad hoc days are available at our standard daily rate of £90. We ask that you request any ad hoc days between 2-10 working days before your preferred date so that we can allow for correct staff planning.



## Plan Conditions

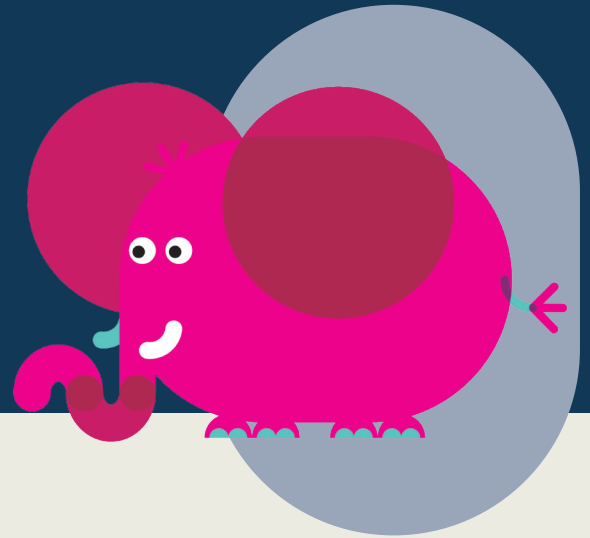
Minimum attendance is 2 full days, including a Friday or a Monday. All plans are subject to availability.



Fees are calculated based on the 51 weeks of the year that we operate, averaged into 12 monthly payments. Monthly payments will include public holidays as well as inset days, which are payable in spite of closure, as our monthly operating costs remain the same.

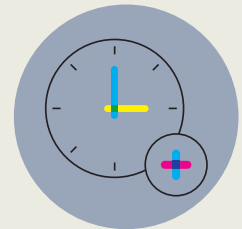


# Funding



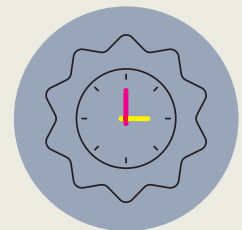
## Universal Entitlement

After their second birthday, all children in England are eligible for 570 hours of funding across 38 weeks of the year (term time). There may be variations of term times between our nurseries, so please speak to your Head of Nursery to confirm. You may still receive a monthly fee if your plan exceeds the funded hours or to cover the cost of additional services.



## Extended Entitlement

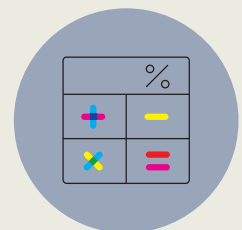
Depending on personal circumstances, your child may also be eligible for a further 570 hours of funding.



## Tax Free Childcare

Tax-free childcare can provide a significant saving for you each month and is available for all children of nursery school age. It can also be used alongside the above funding options. Can be used alongside any funding.

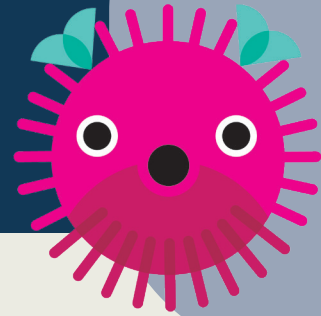
Full details of eligibility for entitlement and tax-free childcare can be found at: [childcarechoices.gov.uk](http://childcarechoices.gov.uk)



Our nurseries are open for 51 weeks of the year. Therefore, the Government funding of 38 weeks of the year (term time), is stretched over the full opening period - equating to 11.18. hours per week.



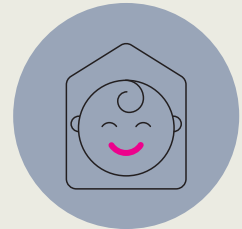
# Place Offers



## Settling In

We offer free settling in sessions, that will vary in time and parental involvement, and which will commence a week prior to your preferred start date. We find the majority of children will feel fully settled within three sessions and, upon reflection with both parent and key person, will then continue to begin their full-day plan the following week. Some children may require a little longer, and we are prepared to offer a further three free settling in sessions across a second week.

We recognise that some children will settle more readily than others, with factors such as their age and stage of development, and the amount of time they have spent away from home and their parents, all contributing. As a result, we look to create a partnership with our parent(s), or guardian(s), and their child's key person to determine how long the settling period will be. Should we feel that a child requires longer than six sessions to feel settled, we will create an adjusted settling in plan. However, invoicing of fees will begin no later than after the six free sessions.



## Registration & Place Offer

To begin registrations, you must have completed an enquiry form, which can be found [here](#). One of our admissions team will be in touch with you within 2 working days to have, or book, a introductory call and/or nursery visit.

After your visit, you will be invited to register for a place and pay a non-refundable registration fee of £200. Subject to our availability, we will send you a formal offer letter or offer for you to join our waiting list. If we're unable to find a place that matches your preferences, your child will remain on our waiting list until a suitable place becomes available, or if you request them to be removed.

Upon receiving our place offer, we ask you accept the place within 48 hours and make the payment of a refundable £400 deposit. This deposit will be then deducted from your final invoice before leaving kinderzimmer.





# Tours



You will have the option to book a tour visit following an introductory call with our admissions team. If not registered already, after your visit, we will invite you to register for a place with a non-refundable registration fee of £200.

Based on our availability alongside your preferences, we will then offer your child a place, or place them on our waiting list.

Once you receive a formal offer letter from us, we ask that you accept the place within 48 hours and pay the refundable deposit of £400.

*Please note, tours will be offered depending on the nursery teams availability, but we will do our best to accommodate your availability as well.*





# Places

## Allocation of Places

When reviewing places we can offer, we consider the following areas of priority:

- Children who have the greatest requirement for childcare sessions
- Children who have siblings who are already attending the nursery
- When the application is received (extra weight is given to those who have been on the waiting list the longest)



## Place Offers

We will send out place offers based on our availability and your set preferences. If the place offer is not suitable, and you do not accept it, your child will remain on the waiting list until a more suitable place becomes available.



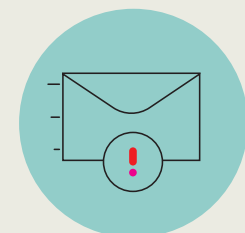
## Acceptance Deadline

Upon accepting a place offer, a £400 place acceptance deposit will be required within 48 hours. This will be deducted from your final invoice when leaving kinderzimmer. Upon receipt of these payments, your plan will be secure.



## Requesting Changes To Your Plan

Should you wish to change your plan, you will need to send a request to your nursery manager. Our plans and timetables have been carefully planned, so any change to your plan is not guaranteed without another plan being available to swap with. When available, we will honour the requested changes as early as possible. However, for a decrease in days, we kindly request 8 weeks written notice to allow us to plan accordingly.





# Cancellations



## Cancelling a Confirmed Place

We ask for notice of cancellation as early as possible.

If you cancel **more than 3 months** prior to your child's start date, your £400 deposit will be refunded in full. However, your £200 place registration fee will remain non-refundable.

If you cancel **between 2-3 months** prior to your child's start date, both the £400 deposit and £200 place registration fee will be non-refundable.

If you cancel between **1-2 months prior** to your child's start date, an additional cancellation fee will be charged at 50% of your plan's monthly fee.

If you cancel between **0-1 months prior** to your child's start date, an additional cancellation fee will be charged at 100% of your plan's monthly fee.

Once your child's place has started with us, we ask that you serve 8 weeks written notice from your desired cancellation date. For example, if you wish to end your child's place on August 31st, we will require served notice on or before July 8th. Fees will remain required to be paid in full for the months of your notice period, with your £400 place acceptance deposit deducted from your final invoice.

